



seveno
DATASIGHT



**ENVIRONMENTAL
DATA MANAGEMENT SOFTWARE**



seveno **DATASIGHT**

Seveno DataSight is an open, scalable solution to your environmental data storage, management, quality control and reporting needs.

Depending on your chosen edition, DataSight helps you to:

- Collect and store environmental and hydrometric data from a variety of sources, such as data loggers, Laboratory Information Management Systems (LIMS), telemetry systems and manual data entry forms.
- Ensure data integrity, validity and compliance via advanced data analysis tools.
- Integrate your environmental database with other systems, such as GIS, SCADA and SAP.
- Configure automatic, scheduled reporting.
- Disseminate your environmental data and reports via web browser connectivity.
- Ensure security of your data via flexible user permission settings and detailed data audit trails.



DataSight Feature Set

DATA COLLATION AND MANAGEMENT

Consolidate all your environmental monitoring data into a single, managed, relational database.

With DataSight you can:

- Import legacy data from Excel and other file formats
- Set up manual data entry forms
- Configure automatic data capture from telemetry, LIMS and electronic files
- Store your monitoring station information, such as calibrations, maintenance records and related documents

QUALITY CONTROL

- Flexible 'drag and drop' graphing and conditional filtering
- Construct complex queries and multiple-series graphs to fully visualize and compare your data of interest
- Save data views for later use or application to other data
- Configure and save environmental standards, apply these to your data and let DataSight show you data that is outside compliance

ADVANCED ANALYSIS

DataSight provides you with a number of modules and tools to create, manipulate and analyze data.

These include:

- Mathematical calculations, with Boolean and many other pre-configured operators
- Rating table generation and management
- Regression analysis
- Gauging calculations and management
- Data interpolations

SYSTEM INTEGRATION

DataSight Enterprise edition ensures that your environmental data is managed in an open, ODBC and XML compliant Microsoft SQL Server database.

- Connect and share this data with other systems and databases via standard SQL queries and views – no middleware required
- Use the DataSight Plug-In capability to develop and integrate your own customized routines on the DataSight data
- Link filtered time-series data to GIS via saved SQL views

SECURITY AND AUDIT TRAILS

Security is a key feature of MS SQL Server, which provides:

- Rich authentication options
- Granular access
- Hierarchical encryption
- Auditing

Supporting this rich server-side capability, the DataSight Enterprise client provides you with an additional range of security options:

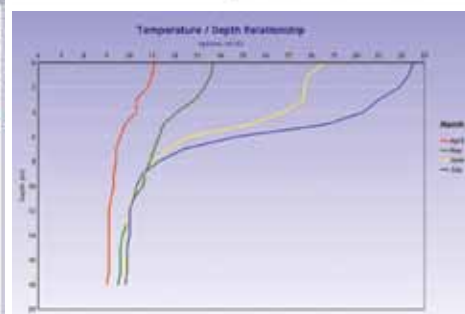
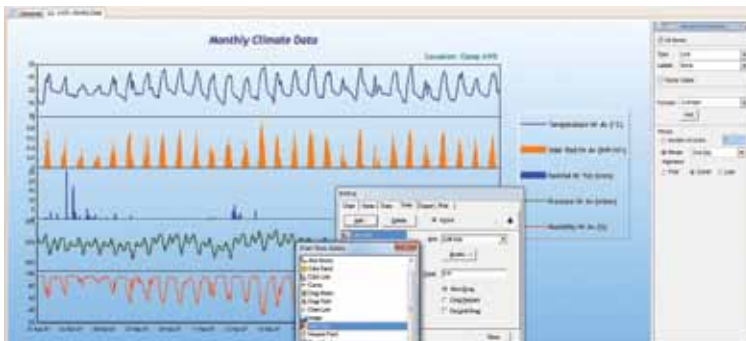
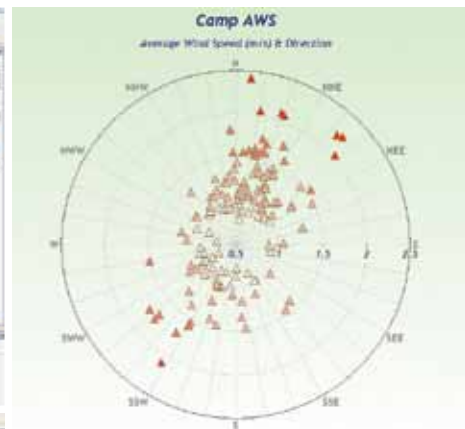
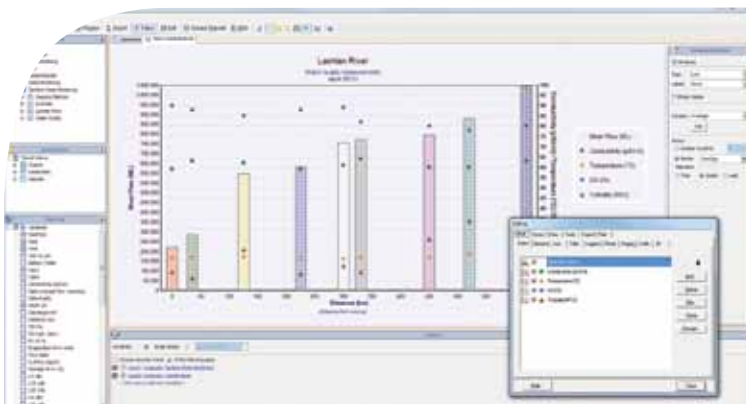
- Manage users and groups
- Set granular permission settings for all software features
- Lock specified data records
- Use the detailed audit logging to track all data changes

COMMUNICATION AND REPORTING

Improve your environmental reporting efficiency by scheduling automatic report creation at your desired time interval.

Use DataSight's pre-configured report templates or design your own via the included Report Creator. In addition, develop your own forms, such as Chain-of-Custody forms, with automatically-populated fields.

Extend your information sharing via DSWeb – secure web browser access to your data and published environmental reports.



DataSight is available in two editions

DataSight DESKTOP

For smaller organizations or individuals who desire a robust Environmental Data Management Solution without the need for IT support, database administration or broader systems integration. Desktop allows multi-user access across a network and provides a rich set of data import, analysis and reporting capabilities.

DataSight ENTERPRISE

Based upon MS SQL Server, providing a rich, open, ODBC and XML compliant environmental database. Enterprise edition delivers advanced administration capability, greater audit tracking, email notifications and additional analysis tools. Enterprise can also be optionally extended with a web browser interface and biological data management.

DataSight v2.9 Editions Comparison

	DataSight DESKTOP	DataSight ENTERPRISE
DATA ENTRY		
Connect to acquisition systems (loggers, LIMs, etc)	✓	✓
Manual data entry forms	✓	✓
Automatic data imports	✗	✓
Centralized forms storage	✗	✓
THE DATABASE		
Hierarchical data structure	✓	✓
Data filtering for customizable views and queries	✓	✓
Multi-user access	✓	✓
Import/Export	✓	✓
Plug-in capability (SDK)	✓	✓
ODBC compliant	✓	✓
Open MS SQL server	✗	✓
Saved data views for external systems (GIS, etc)	✗	✓
Administrator's console	✗	✓
DATA ANALYSIS, QC/QA & COMPLIANCE		
Graphical visualization and analysis	✓	✓
Management and application of standards	✓	✓
Data quality codes	✓	✓
Conversions/Calculations	✓	✓
Gauging calculator	✓	✓
Task scheduler	✓	✓
Storage of control documents	✓	✓
Regression analysis	✗	✓
Data interpolations	✗	✓
Data status flags	✗	✓
COMMUNICATION & REPORTING		
Tabular reports	✓	✓
Report creator – design and templates	✓	✓
Email notifications	✗	✓
SECURITY		
Detailed audit trail	✗	✓
User access and editing permission settings	✗	✓
OPTIONAL EXTENSIONS		
DSWeb – Web Browser Interface	✗	✓
DataSight Biological – Biological Data Management	✗	✓

DSWeb

SECURELY DISTRIBUTE YOUR DATA

- DSWeb provides web browser access to your DataSight Enterprise databases.
- Rich security and user options ensure flexibility to set access rights at both project and data variable levels.
- Configure automatic reports and graphs for up-to-the-minute environmental data reporting.

MINIMUM SYSTEM REQUIREMENTS

- Microsoft Windows XP, Windows Vista or Windows 7
- Memory: 1GB or greater
- DataSight Enterprise edition requires MS SQL Server 2005, 2008 or 2008 R2

seveno

8310 South Valley Highway, 3rd Floor
Englewood, CO 80112

Tel: 303-524-1088

Fax: 303-524-1101

www.seveno.com

info@seveno.com